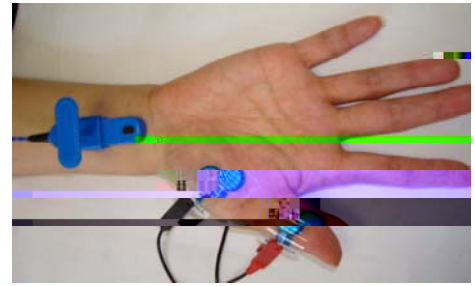
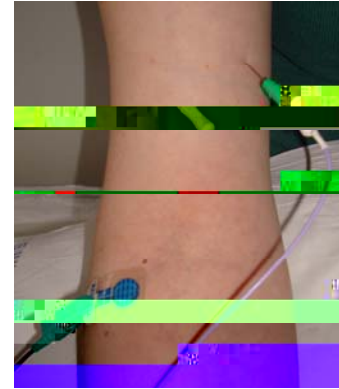


Nerve conduction studies

We shall apply small electric pulses to stimulate the nerves, usually in the arms or legs. The reactions are recorded by surface electrodes that are attached to the skin and which can be easily removed afterwards. The electrical stimulation can be a little unpleasant, but should not cause too much discomfort and any sensation is very short.

**Electromyography (EMG)**

We shall insert a fine sterile electrode (like taking blood) through the skin into the muscles. We use the needle to record activity and do not give electrical pulses or injections through nor do we take a tissue sample. Each needle is only ever used on one person, but we use it for several muscles. It cannot transmit infection from another person to you. After an insertion we will ask you to move the muscle or relax it. The procedure may sound worse than it actually is and causes only minor discomfort.

**THE DURATION OF THE INVESTIGATION**

Depending on the problem, the physician or physiologist will decide how many and which nerves or muscles need to be examined. Very often, the need to investigate further nerves and muscles depends on the results as the investigation proceeds. Depending on the complexity of the problem, EMG and nerve conduction studies may

with te9eip on the re